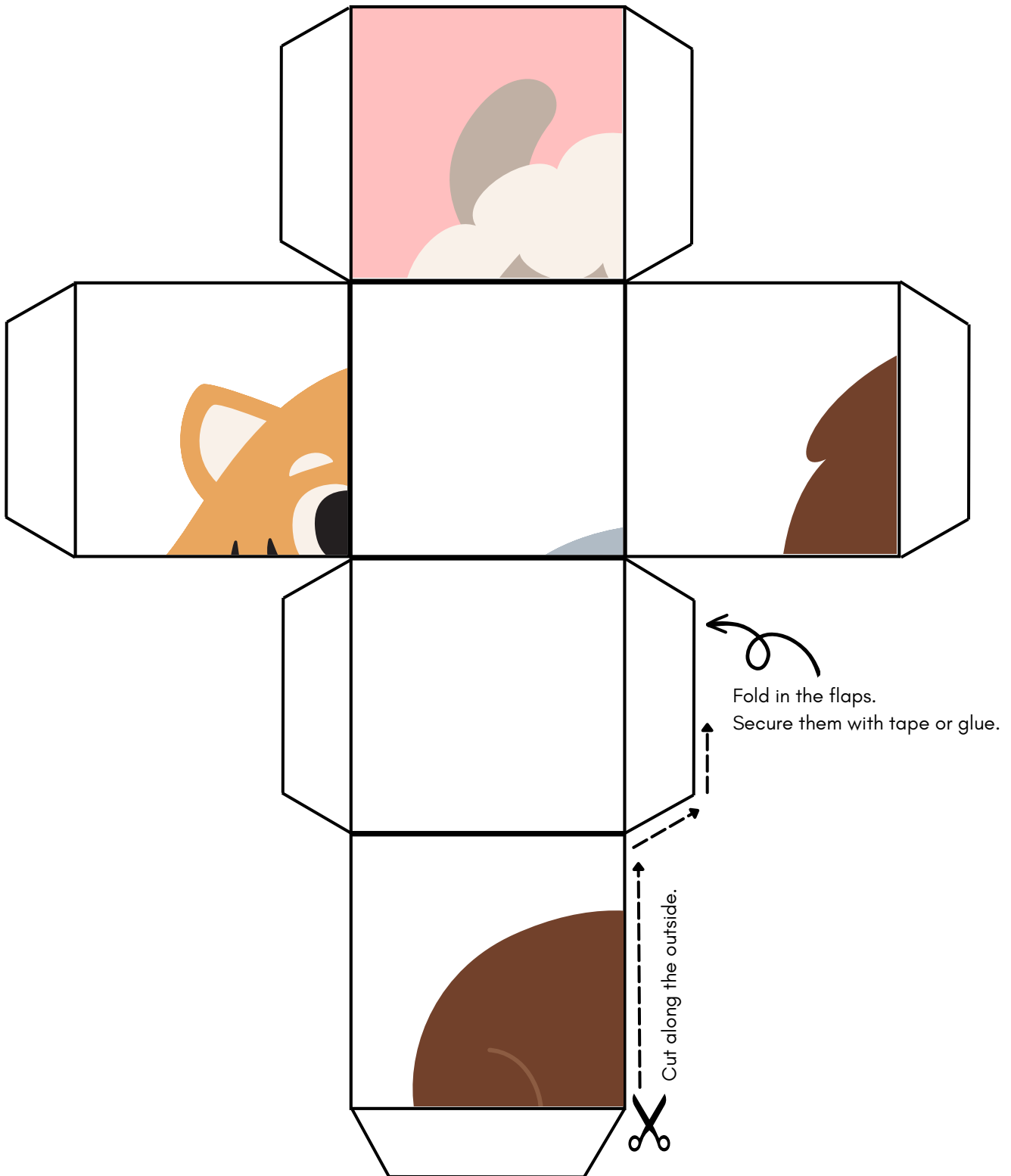


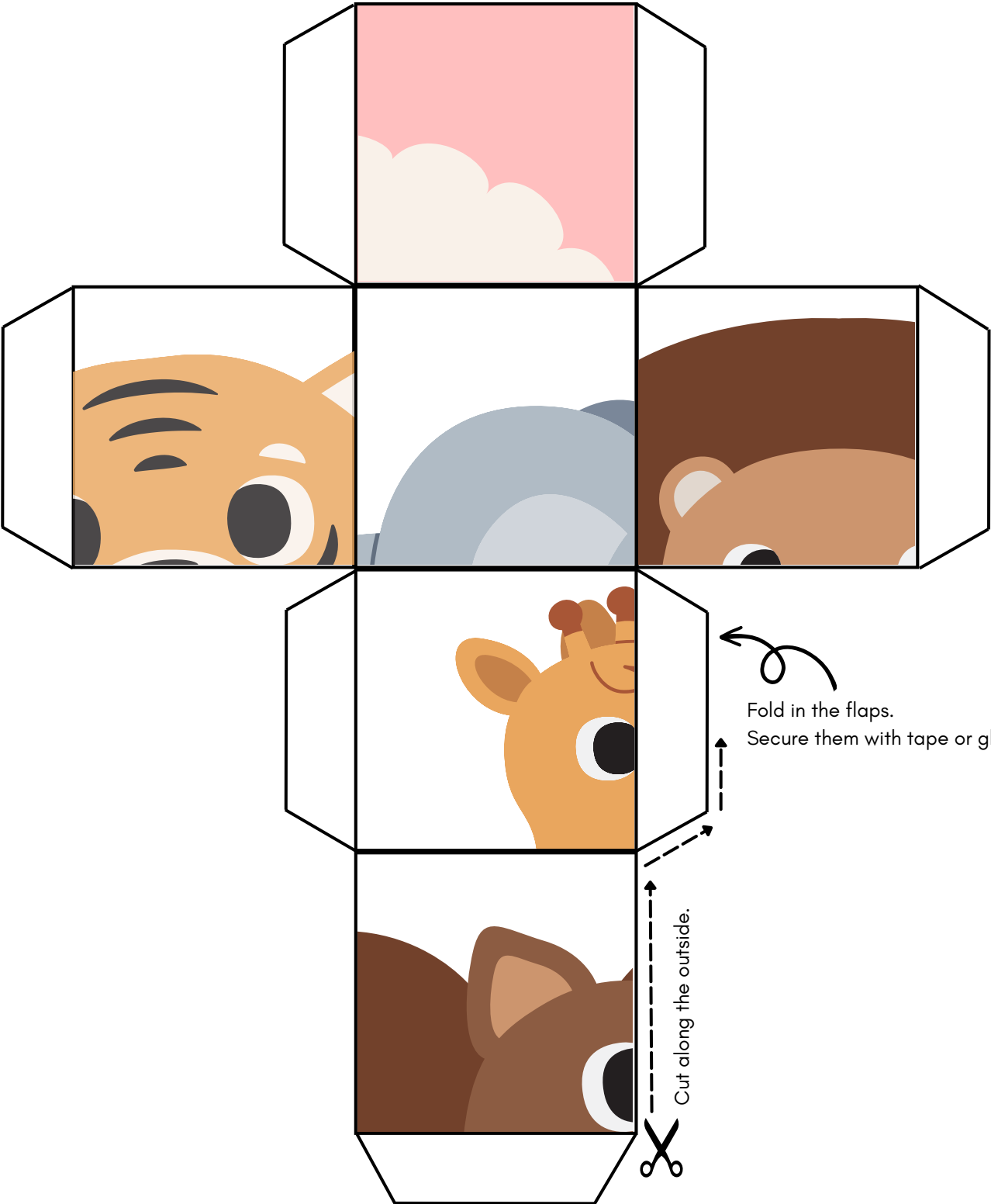
# ANIMAL DICE TEMPLATE (1/9) TOP LEFT

Cut along the outside lines, fold in the flaps, and secure them with tape or glue.



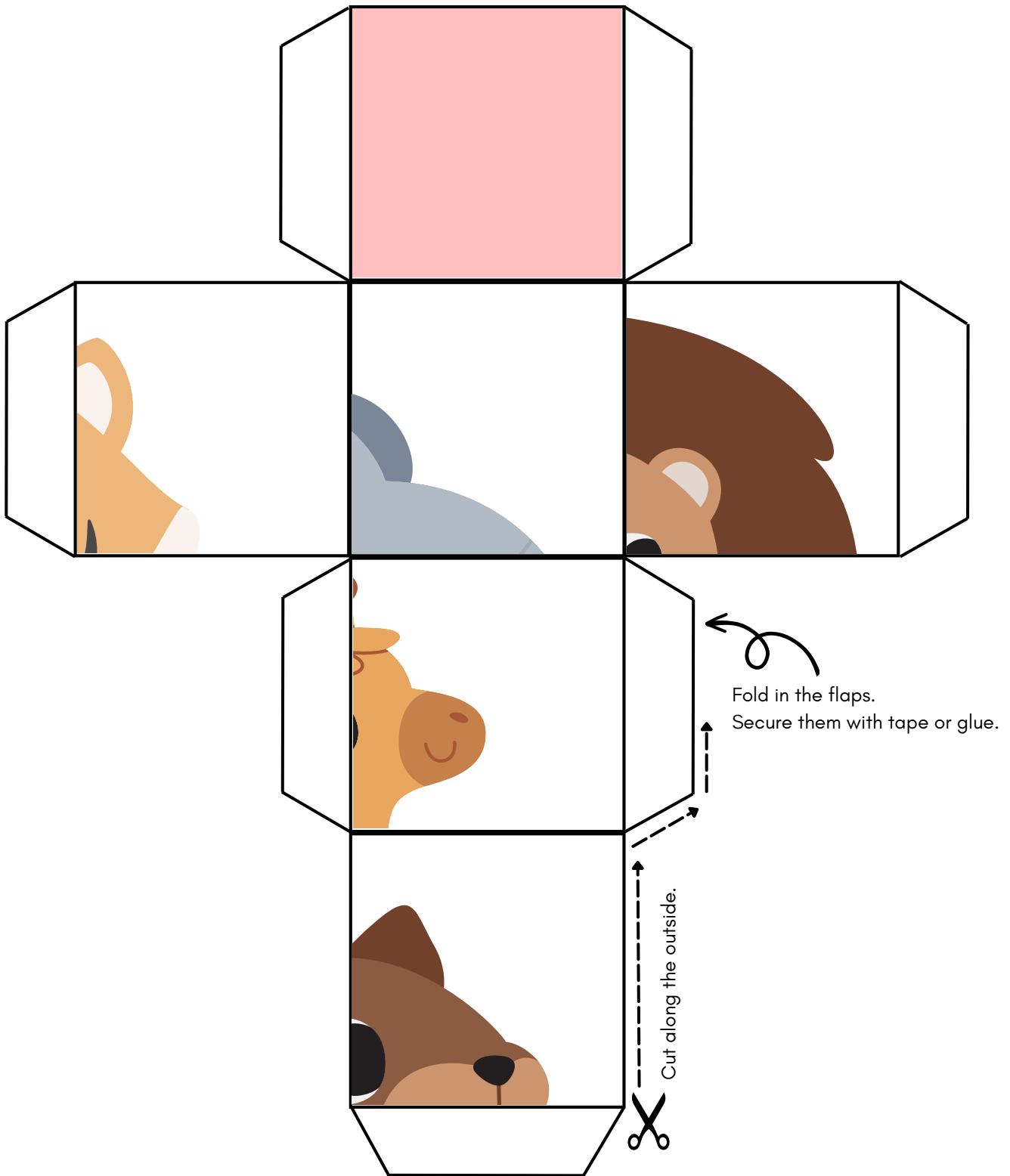
# ANIMAL DICE TEMPLATE (2/9) TOP MIDDLE

Cut along the outside lines, fold in the flaps, and secure them with tape or glue.



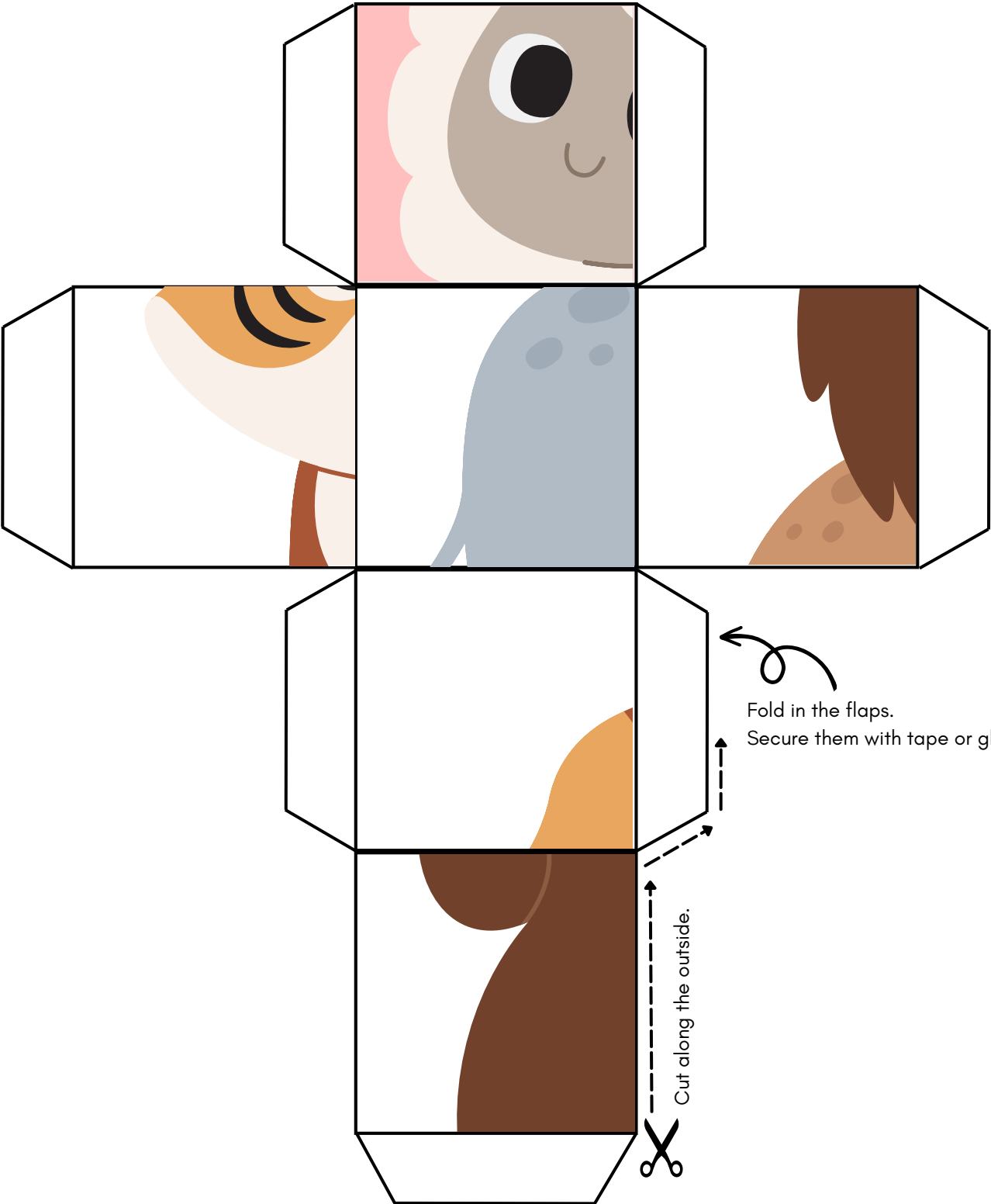
# ANIMAL DICE TEMPLATE (3/9) TOP RIGHT

Cut along the outside lines, fold in the flaps, and secure them with tape or glue.



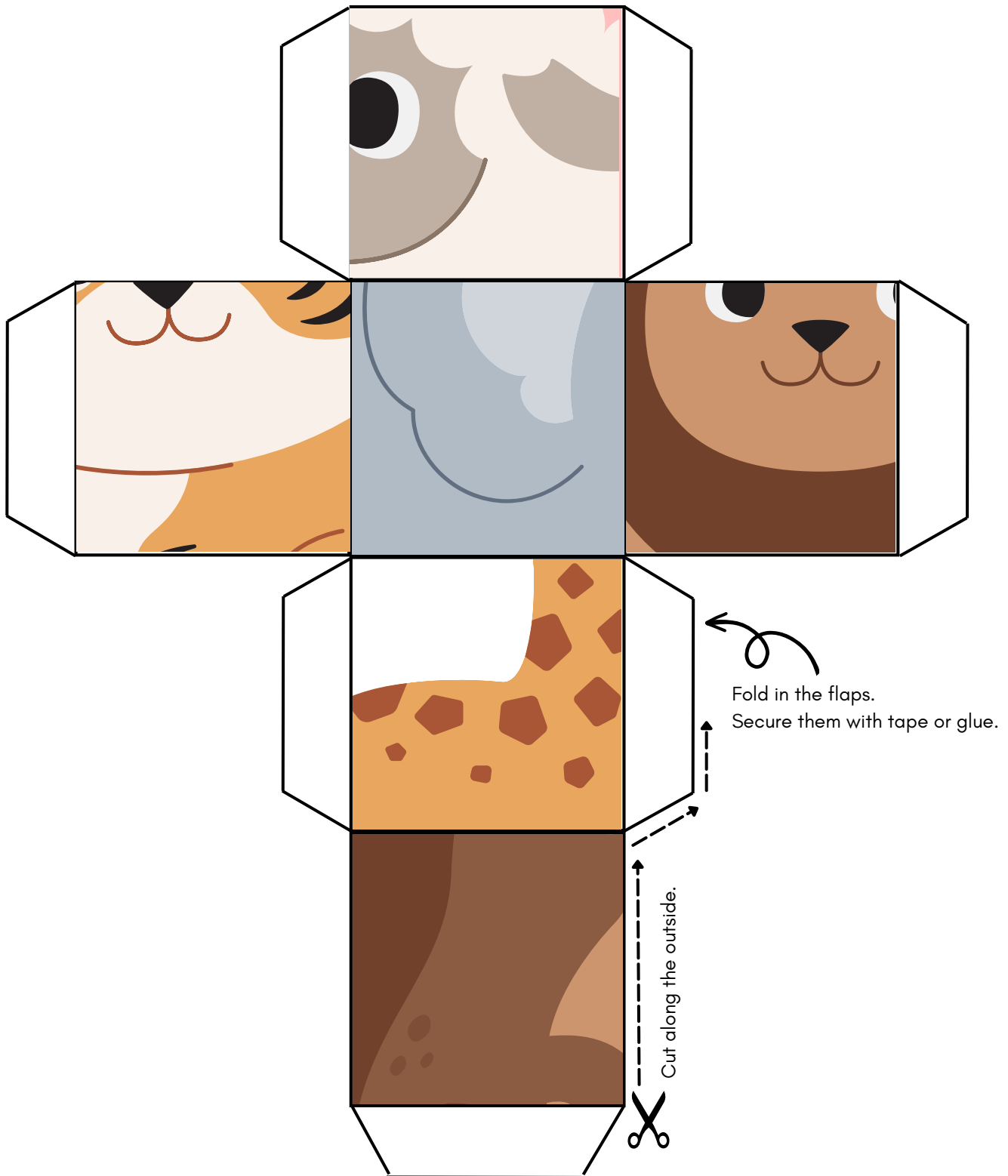
# ANIMAL DICE TEMPLATE (4/9) MIDDLE LEFT

Cut along the outside lines, fold in the flaps, and secure them with tape or glue.



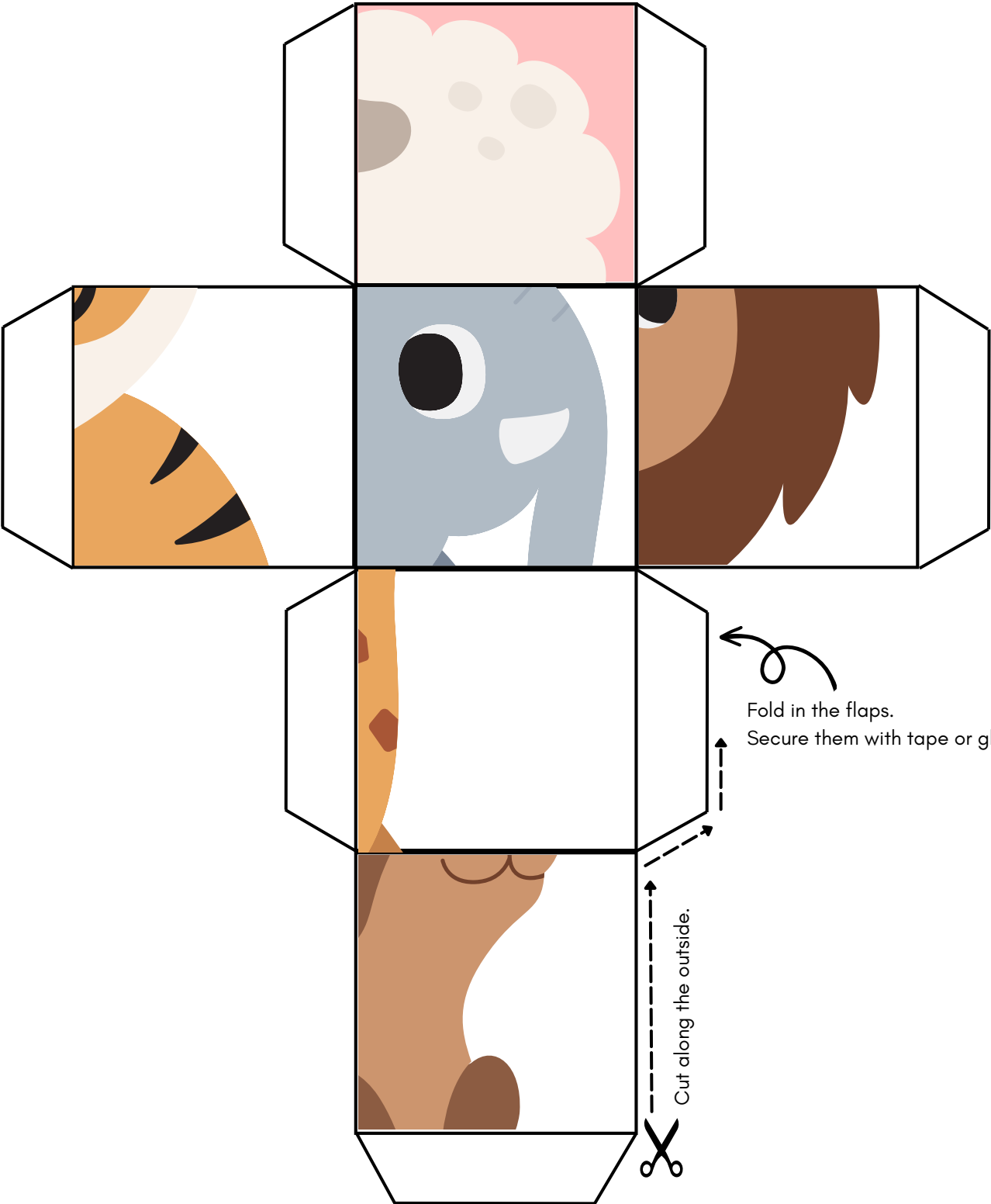
# ANIMAL DICE TEMPLATE (5/9) MIDDLE CENTER

Cut along the outside lines, fold in the flaps, and secure them with tape or glue.



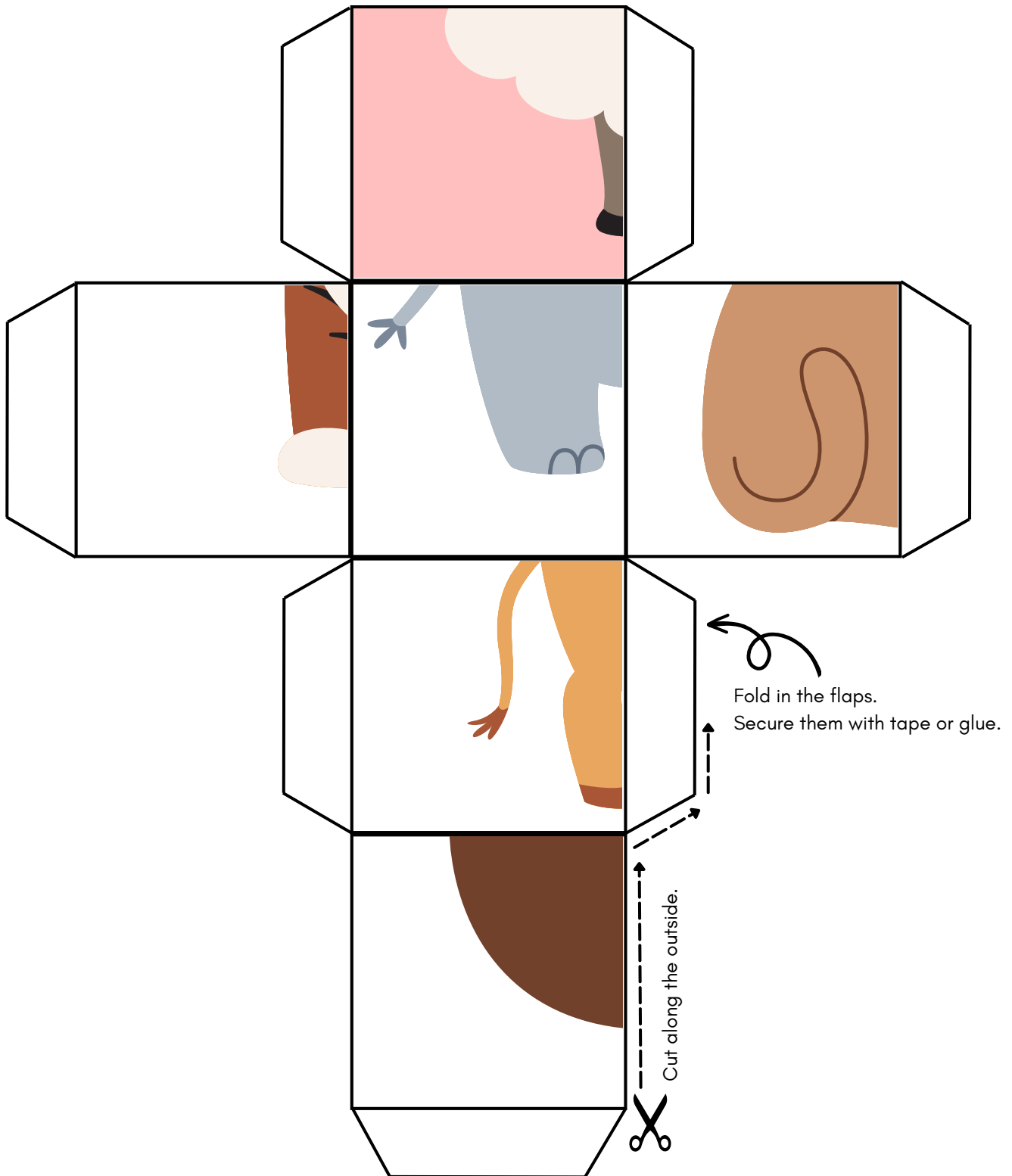
# ANIMAL DICE TEMPLATE (6/9) MIDDLE RIGHT

Cut along the outside lines, fold in the flaps, and secure them with tape or glue.



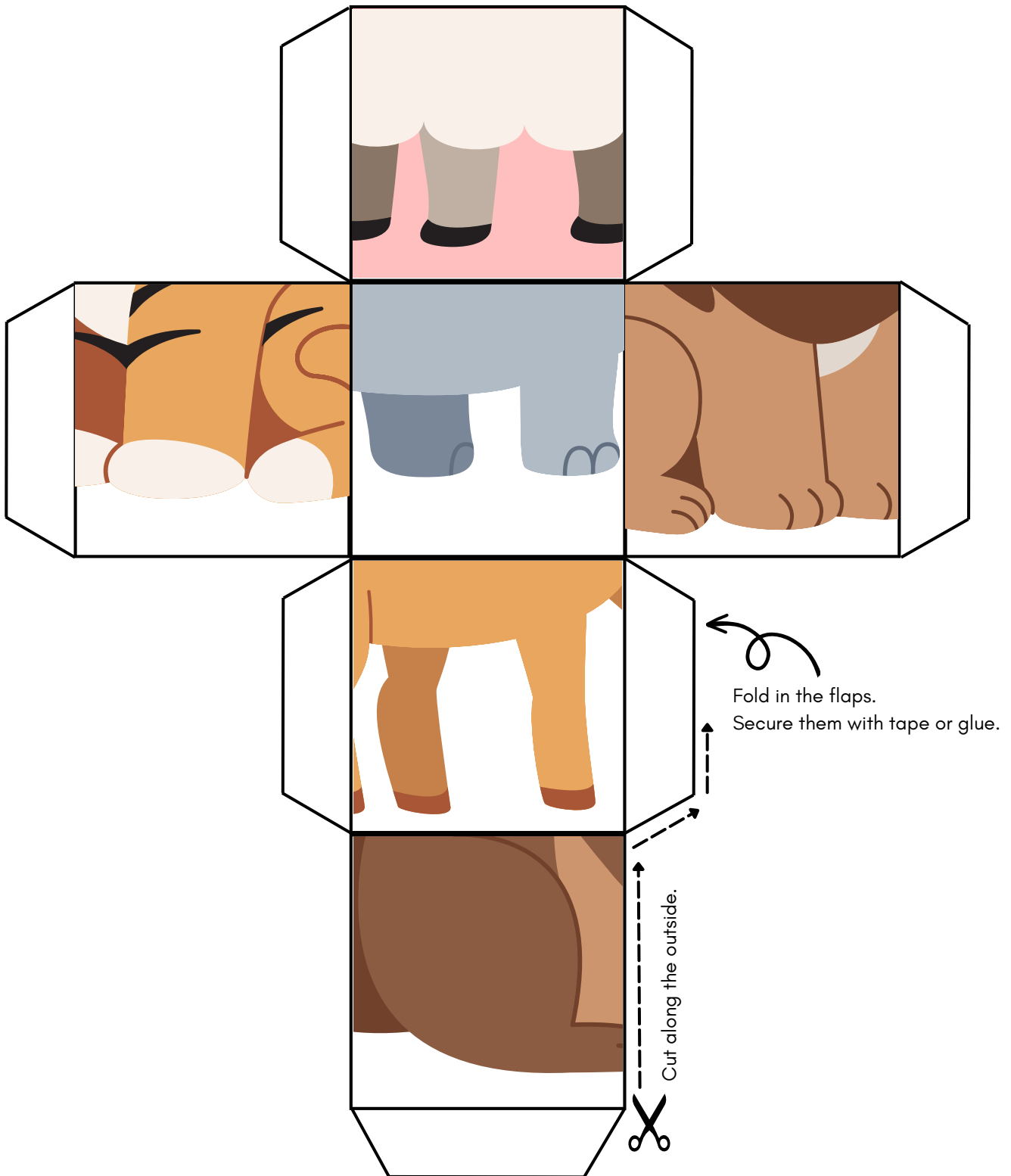
# ANIMAL DICE TEMPLATE (7/9) BOTTOM LEFT

Cut along the outside lines, fold in the flaps, and secure them with tape or glue.



# ANIMAL DICE TEMPLATE (8/9) BOTTOM MIDDLE

Cut along the outside lines, fold in the flaps, and secure them with tape or glue.





# ANIMAL DICE TEMPLATE (9/9) BOTTOM RIGHT

Cut along the outside lines, fold in the flaps, and secure them with tape or glue.

